

# What is Quality Assurance???





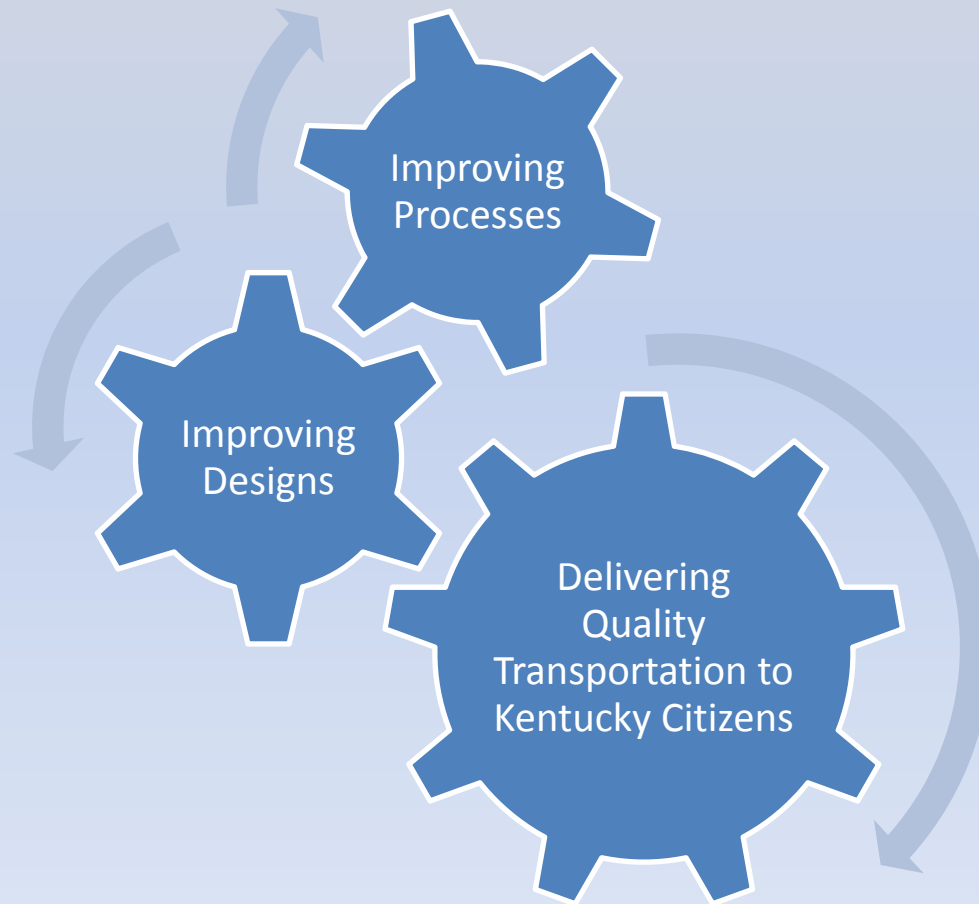
# Quality Assurance Branch

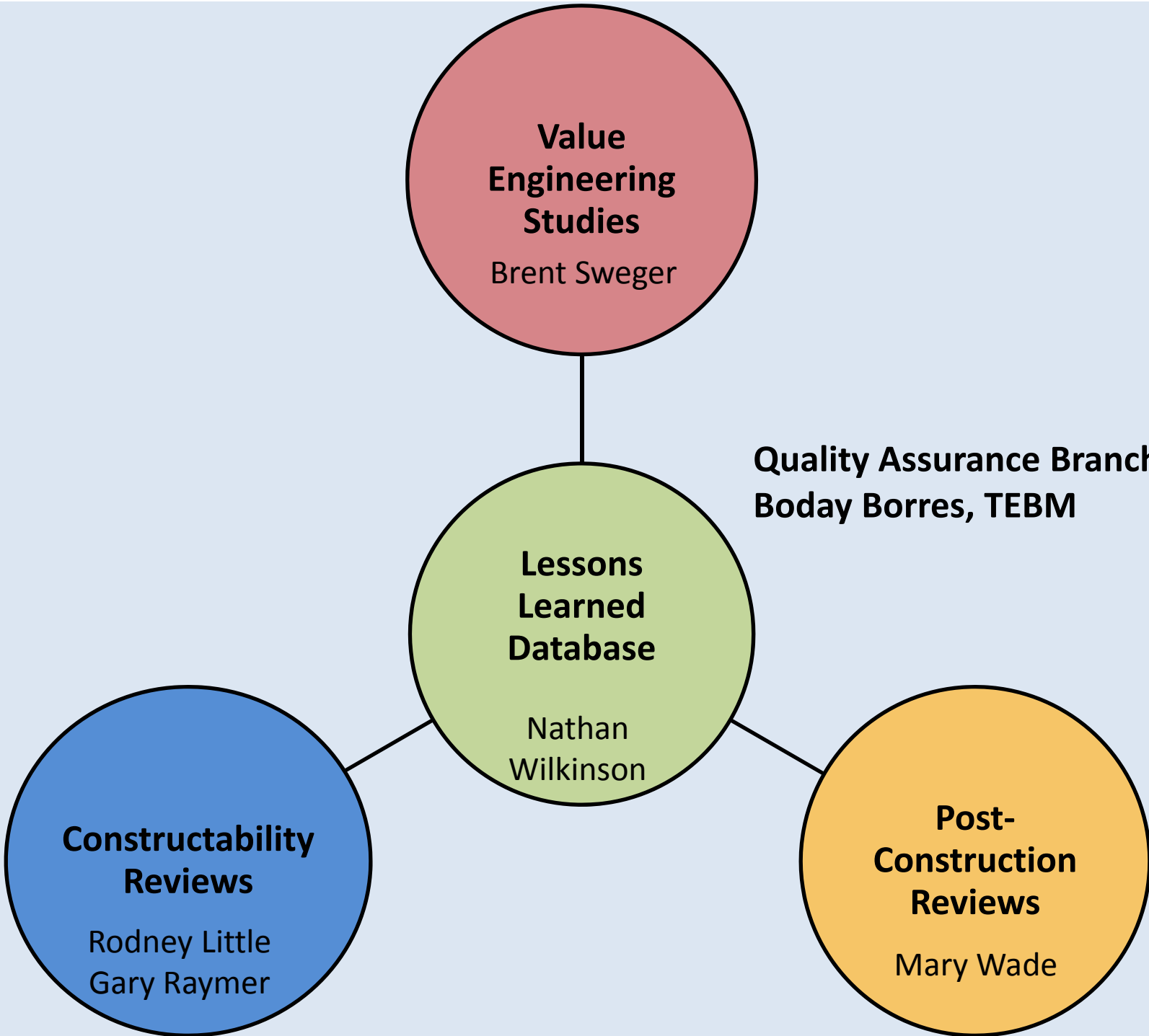
We are civil servants dedicated to developing transportation designs of **Excellence**. We find ways to **Improve** and design processes that assure **Common Sense** and **Accountability** balancing these values: maintaining **Fiscal Constraint** the transportation **Purpose** need, reflecting the public's needs and interests, preserving **Enhancing** the environment, ensuring **Constructability** and improving the **Quality of Life** for Kentucky communities.

## Vision Statement

# Quality Assurance Branch

Division of Highway Design





# ***VALUE ENGINEERING***

# Value Engineering

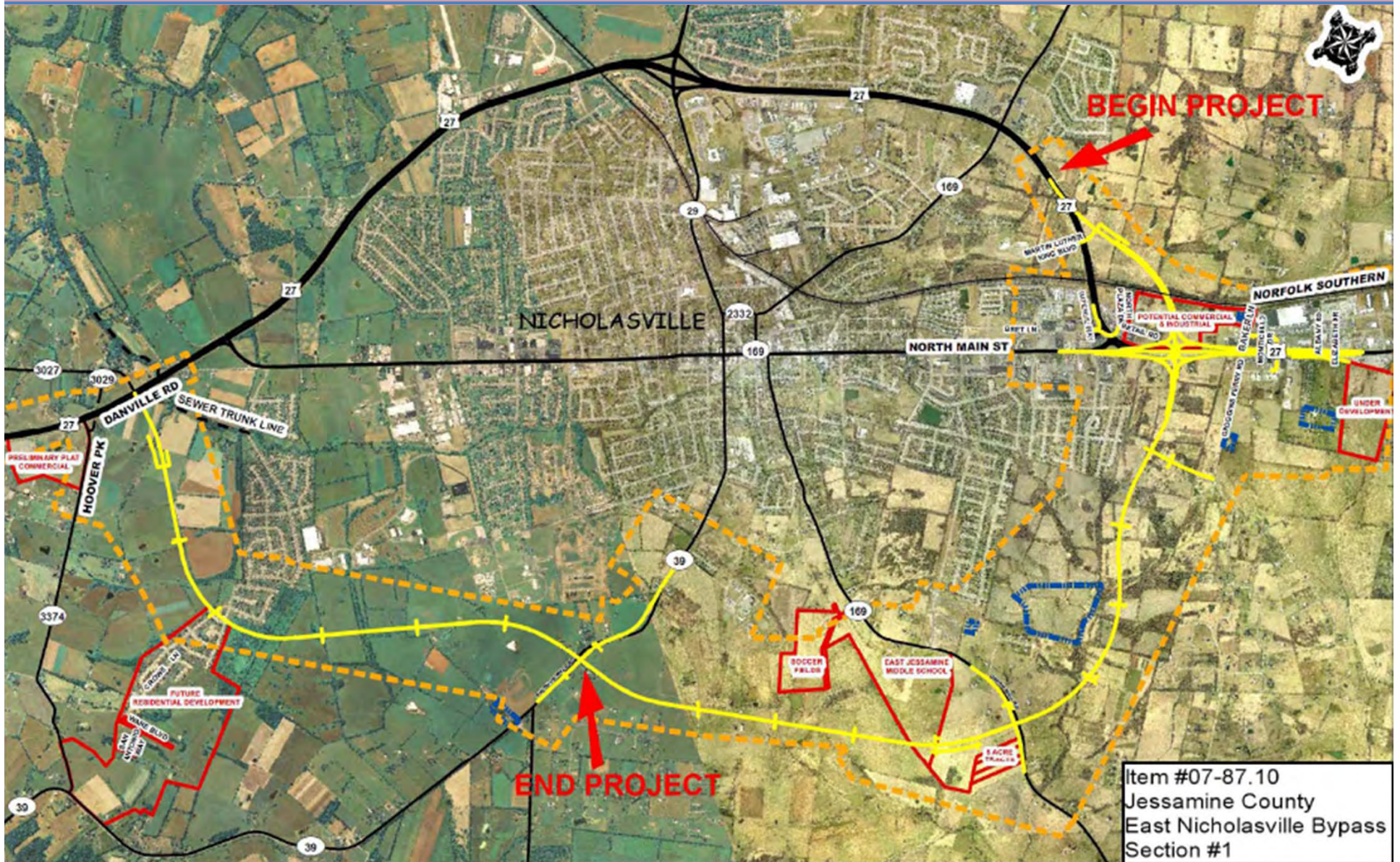
- Goals of
  - improving design & adding value
  - affirm design objectives
  - removing unnecessary costs
- For projects >\$25M and on the NHS
- Fresh look using new eyes
- Best time: at end of Phase I
- Can be used for any project



“There’s a way to do better....find it.” Thomas A. Edison



# What is a VE project?

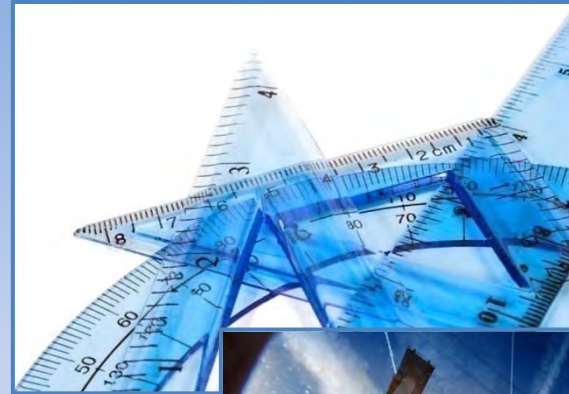


***CONSTRUCTABILITY  
REVIEWS***



# Constructability Reviews

- Reviewing design plans
  - MOT
  - Road/bridge alignment
  - Reducing errors
- Improving communication & coordination
- Best time: during final joint inspection



# Major Issues Found During 2010 Constructability Reviews

- **Overuse of part-width construction**

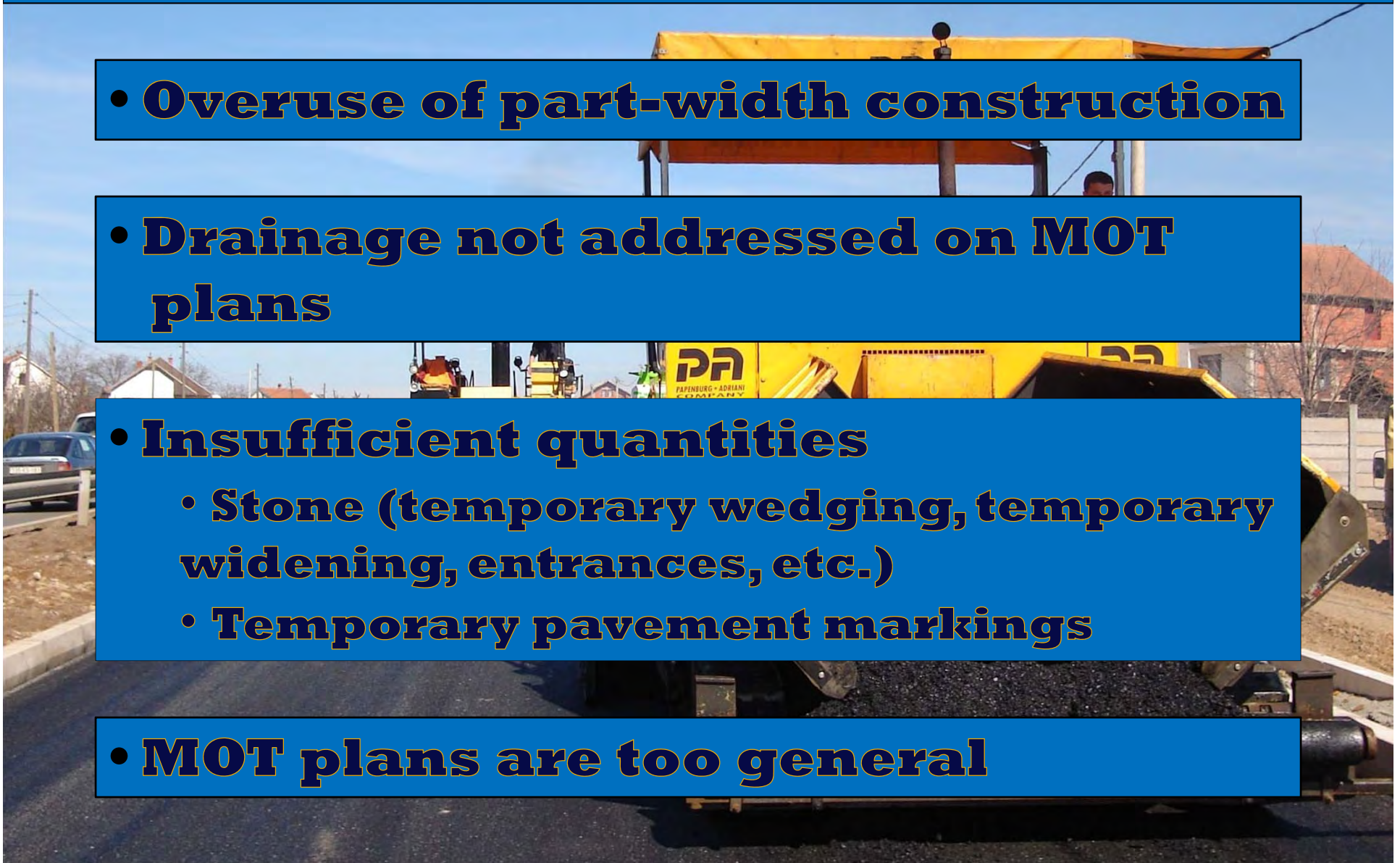
- **Drainage not addressed on MOT plans**

- **Insufficient quantities**

- **Stone (temporary wedging, temporary widening, entrances, etc.)**

- **Temporary pavement markings**

- **MOT plans are too general**



# QUALITY ASSURANCE BRANCH CONSTRUCTABILITY REVIEWERS

GARY RAYMER

KYTC Districts 1-6

[GARY.RAYMER@KY.GOV](mailto:GARY.RAYMER@KY.GOV)

270-766-5066 ext. 286 (office)

CHARLES "RODNEY" LITTLE

KYTC Districts 7-12

[RODNEY.LITTLE@KY.GOV](mailto:RODNEY.LITTLE@KY.GOV)

606-677-4017 ext. 310 (office)

AVAILABLE TO ASSIST YOU WITH:

- Plan Reviews
- Project Team Meetings
- Constructability Meetings
- Maintenance Of Traffic Meetings
- Other Concerns Or Questions



# ***POST-CONSTRUCTION REVIEWS***

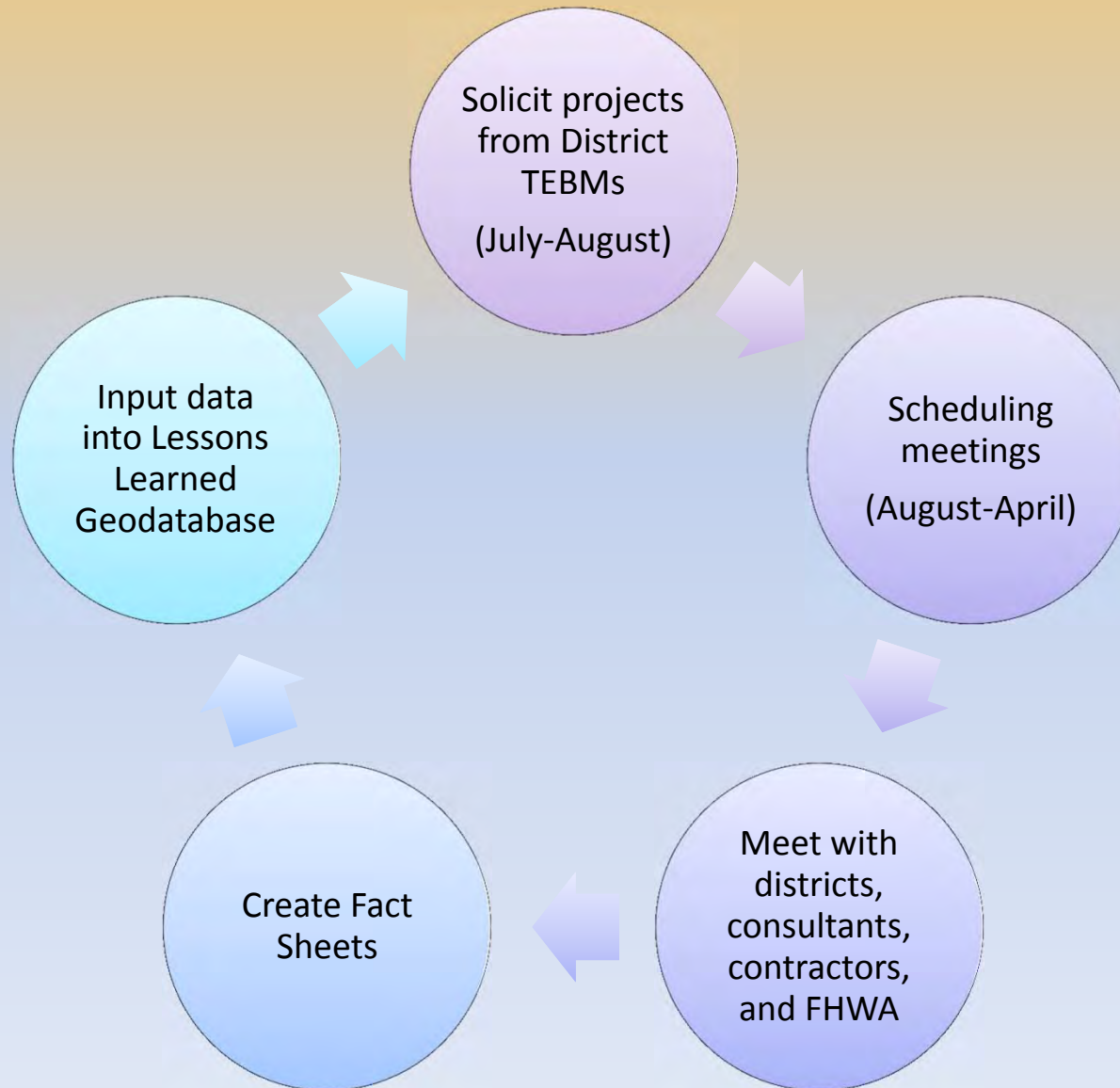


# Post-Construction Reviews

- On projects with construction costs >\$1M and open to public for at least a year
- Goal of 4 projects from each District per fiscal year
- Moving towards reviewing more projects that are smaller



# Post-Construction Review Cycle



# Post-Construction Review Fact Sheets

General Information	
Project County:	<b>Pike</b>
Project Designer:	<b>Palmer Engineering</b>
Item Number:	<b>030749</b>
Contractor:	<b>Bizzack Construction, LLC</b>
Resident Engineer's Name:	<b>Paxton Weddington</b>
Route:	<b>US 119 Knoxville-South Williamson Road</b>
Project Type and Length:	<b>Highway, Grade, Drain &amp; Asphalt Surface, 2.994 miles</b>
Project Description:	<b>Bridge Replacement</b>
File Name:	<b>1_12_008_10_Pike_0_10.pdf</b>
<b>Attendees:</b>	
Joe Tackett, KYTC D12	Kevin Damron, KYTC D12
Samuel Hale, KYTC D12	George Collins, KYTC D12
Paxton Weddington, KYTC D12	Shawn Ray, KYTC D12
Mary Westfall-Holbrook, KYTC D12	Ronald Slone, KYTC D12
John Michael Johnson, KYTC D12	
David Lindmeman, Palmer Engr.	
Brad Robson, Palmer Engr.	
Charles Allen, KYTC CO Design	
Boday Borres, KYTC CO Design	
Wheeler Nevels, KYTC CO Maintenance	
Vibert Forsythe, KYTC CO Construction	
Change Order Total:	<b>12</b>
Original Project Cost:	<b>\$ 33,240,101.96</b>
Change Order Total:	<b>\$ 4,898,680.18</b>
Total Amount:	<b>\$ 38,238,782.14</b>
CO % Increase:	<b>14.69%</b>
<b>Notes:</b>	
<b>Category:</b> Design	<b>Sub-Topic:</b> Omission
Settlement of abutments were needed during the project and was written in the geotechnical report but not in the Plans.	
<b>Solution:</b>	
Review plans for constructability.	
<b>Category:</b> Construction	<b>Sub-Topic:</b> Top of Rock
Structure at Pier 1 (SB) had loose rock when excavated to the suggested elevation. Had to use mass concrete to remedy the situation.	
<b>Solution:</b>	
A thorough investigation for geotechnical data for areas where structures are involved. More borings are suggested possibly when substructure is designed and footer dimensions are known.	

# Reoccurring Post-Construction Review Issues

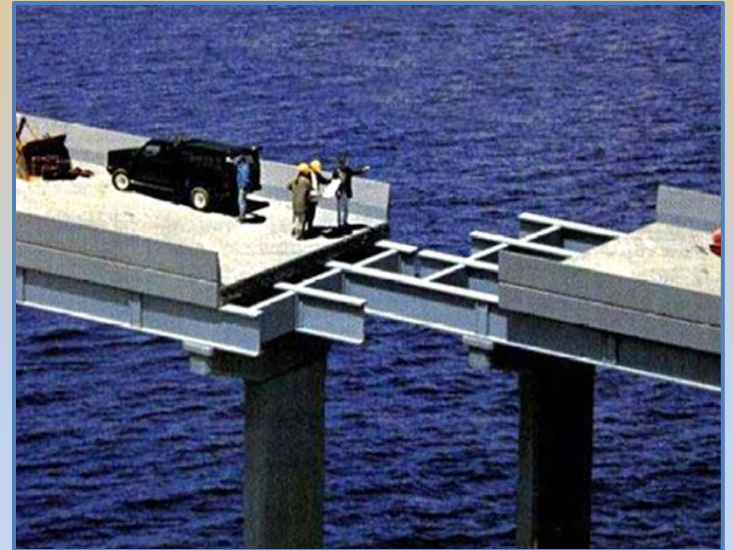
- Utilities
  - Relocation
    - Communication
    - Timely relocation
    - Documentation
    - Above Bridge Sites
  - Lighting Plans
    - Location of light poles
- Pavement
  - Pavement Depth
    - Where MOT uses shoulders
    - On Interstate median crossovers
    - Where heavy truck/bus traffic exists





# Reoccurring Post-Construction Review Issues

- Structures
  - Guardrail tie-ins
  - Roadway-structure alignment
  - Accuracy of elevations
    - More coring needed?
  - Settlement platforms
  - Masonry Coating
    - Specifications/designers?
- Geotechnical
  - Open cut
    - Landslides
      - Materials?
      - Plan note?
  - Use of existing material
    - Class IV channel lining

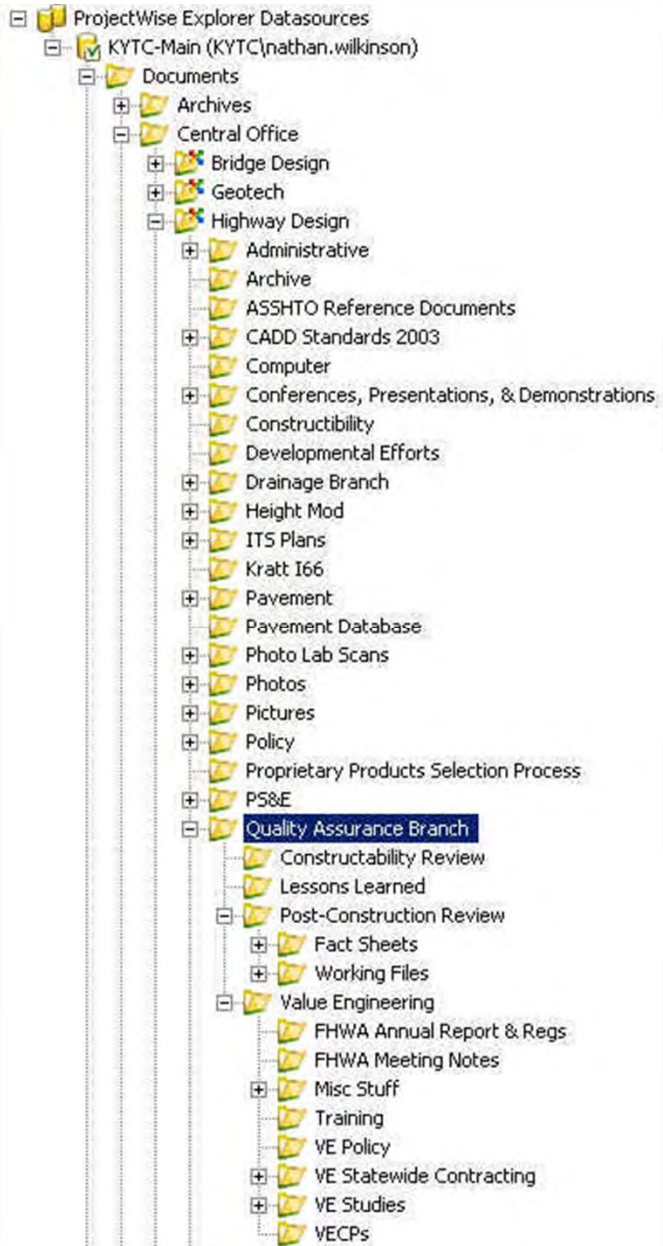


# Reoccurring Post-Construction Review Issues

- Design
  - CAPs
  - Railroad flagmen
    - Estimating hours
    - Wages/rates
  - MOTs
  - Turning radius for truck/bus movements
  - Review & update plans from shelf

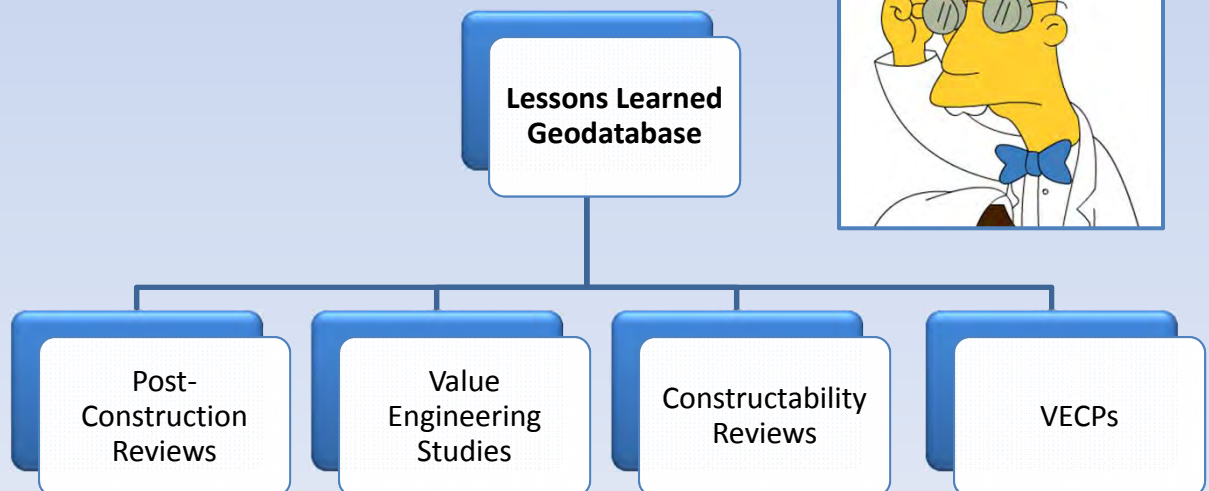


# ***LESSONS LEARNED DATABASE***



# Lessons Learned Database

- Information from all 3 programs
- GIS mapping to track and analyze patterns
- Have solutions readily available
- Review annually to uncover historical trends





# Linking Facts Sheets to GIS Data

The screenshot displays the ArcMap interface with a GIS map of a road project area. A yellow line highlights the project route. An Adobe Acrobat window is overlaid on the map, showing a 'Post-Construction Review Fact Sheet' for the 'Adair Maintenance Facility' project. The fact sheet includes project details, dates, and a table of general information.

**Post-Construction Review Fact Sheet**

Written: 11/17/2009 Page 1

Date of Review: 11/12/2009 Facilitated By: Boday Barnes, PE  
 Place of Review: District 8 - Adair Maintenance Facility Siamak Shahaghi, PE

General Information		
Project County:	Adair	Project Designer: Johnson, Depp & Ouisenberry
Item Number:	8-159.50	Project Contractor's Name: Gaddie Shamrock, LLC
PCN:	071025	Resident Engineer's Name: Mark Robertson
Route:	Western Bypass	
Project Type and Length:	Grade, Drain & Surface, 2.4 mi	
Project Description:	From KY 55 at the Louie B. Nunn Parkway	



# 2010 Post-Construction Reviews



## Legend





-  *Post-Construction Review Projects*
-  *Interstates*
-  *Parkways*
-  *US Highways*



# 2010 Post-Construction Review Projects with MOT Issues



**Legend**

-  PCR Projects with MOT Issues
-  Interstates
-  Parkways
-  US Highways





# Average Change Order Percent Cost Increase Per PCR Project

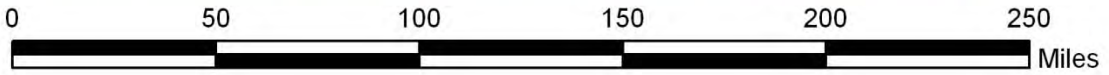
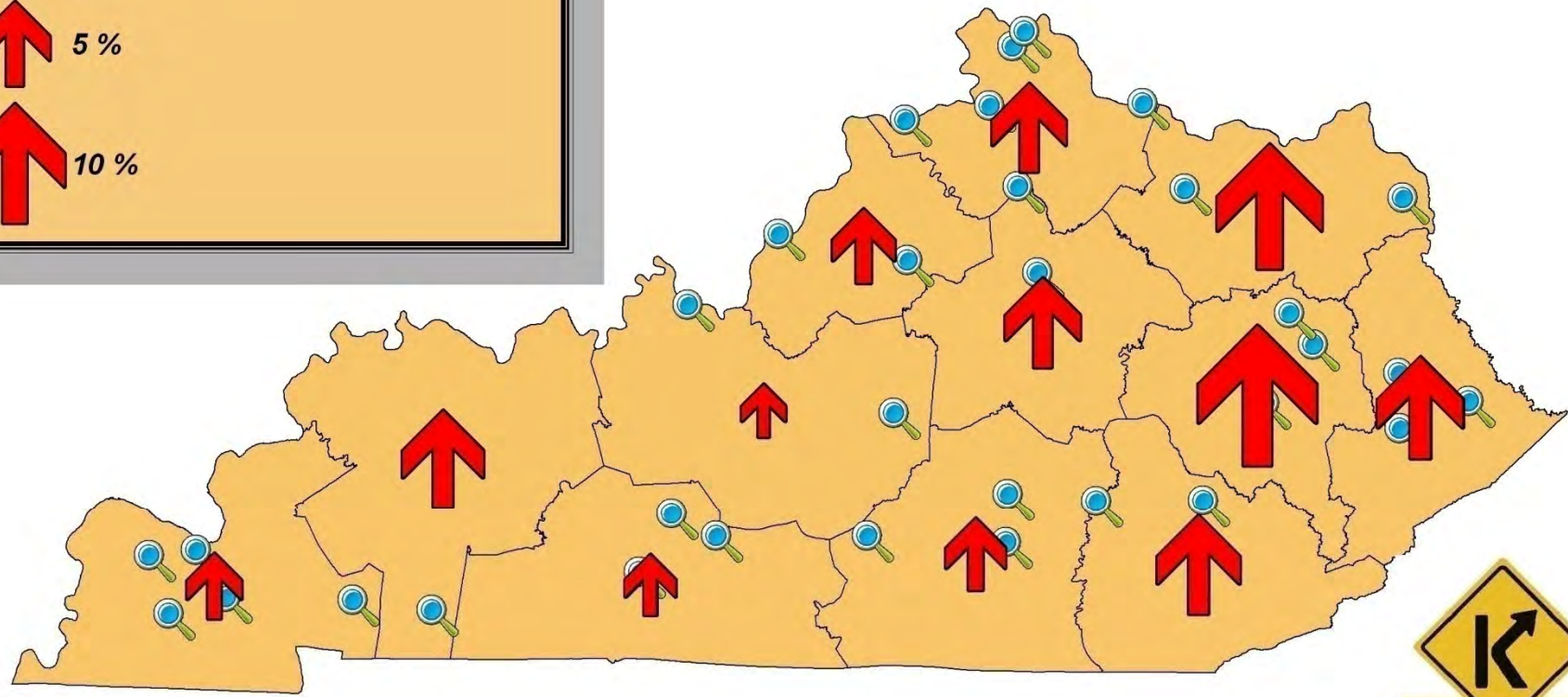


**Legend**

 *Post-Construction Review Projects*

*Average Percent Cost Increase Per Project Due to Change Orders*

-  1 %
-  5 %
-  10 %



# The Future of Lessons Learned Database

- Mapping historical Post-Construction Reports
- Creating new datasets:
  - Value Engineering
  - VECPs
  - Constructability Reviews
- Launching website for sharing Lessons Learned GIS data





# In Conclusion...



- Value Engineering
  - We need your help identifying projects
  - Keep your eyes open for new Design Memo
  - VE training in the fall
- Constructability Reviews
  - We have staff available to help assist you
- Post-Construction Reviews
  - Call for 2011 submittals



**Thank You!**

# Quality Assurance Branch

Division of Highway Design

**Boday Borres , P.E.**

502-564-9900 x3362



~ It's Time To Get Serious About Quality Assurance ~